




climbing
tech

Small, smart and flexible



VOLUMES





Simple, creative and adaptable

The NUBS volumes have attractive shapes, are simple to install and relocate in climbing walls and tested in different world cup events. They are produced in the glass reinforced polyester technology, providing an excellent volume resistivity and durability in both, inside or outside use. The volume sandy texture surface can be coloured in different colours providing excellent holds and friction. Most of the volumes have boreholes with mounted nuts for attachment of additional holds.

The climbing on NUBS volumes is creative and a real challenge for beginners as well as for top climbers.

We are

a professional team with over ten years of experience in manufacturing climbing equipment (indoor and outdoor walls, boulders, volumes, holds, jungle gyms, etc.) and climbing related products and services. In order to ensure a better quality we cooperate and consult with experts in the field of professional and recreational climbing.

We are based in Slovenia, but are familiar with working across the borders. We have gained a number of experience in numerous national projects and international markets (Norway, France, Italy, Switzerland, Germany, Austria, Croatia).

As we are climbers ourselves, we are in touch with the innovations and trends as well as testers of our own work in practice.

Contents:

**SPACE
PROGRAM**
1-10

**PYRAMIDE
PROGRAM**
11-18

**CUBE
PROGRAM**
19-24

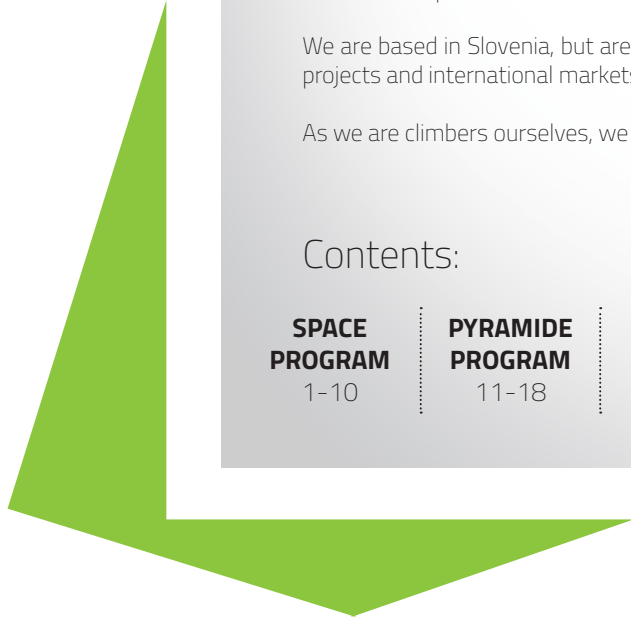
**ANIMAL
PROGRAM**
25-28

**NATURE
PROGRAM**
29-32

**WOOD
PROGRAM**
33-40

**CAMPUS
RUNGS**
41

**TECHNICAL
DATA**
42



SPACE PROGRAM



Excellent friction



Durability



Simple installation



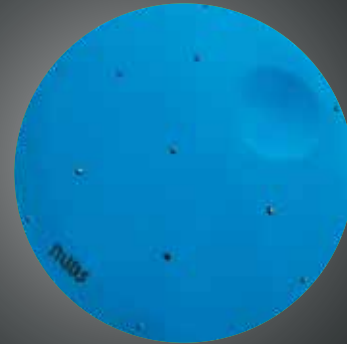
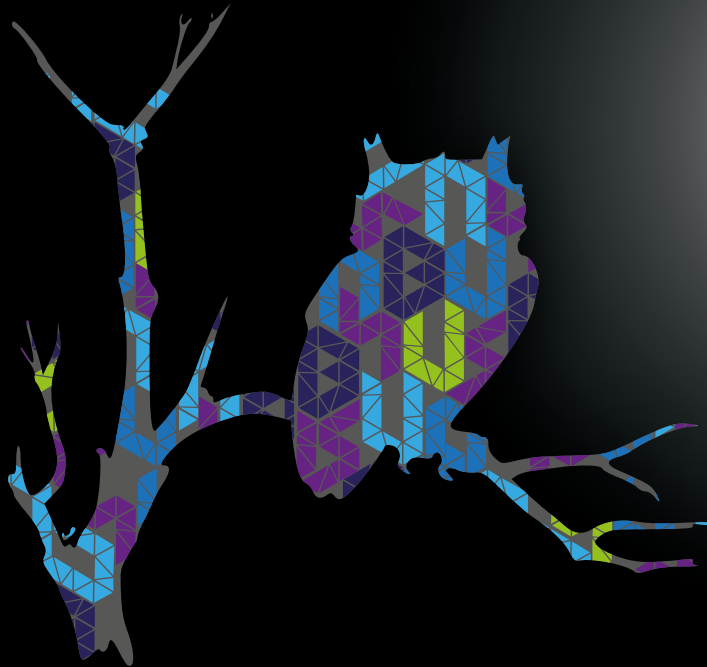
Adding holds possibility



Aesthetic

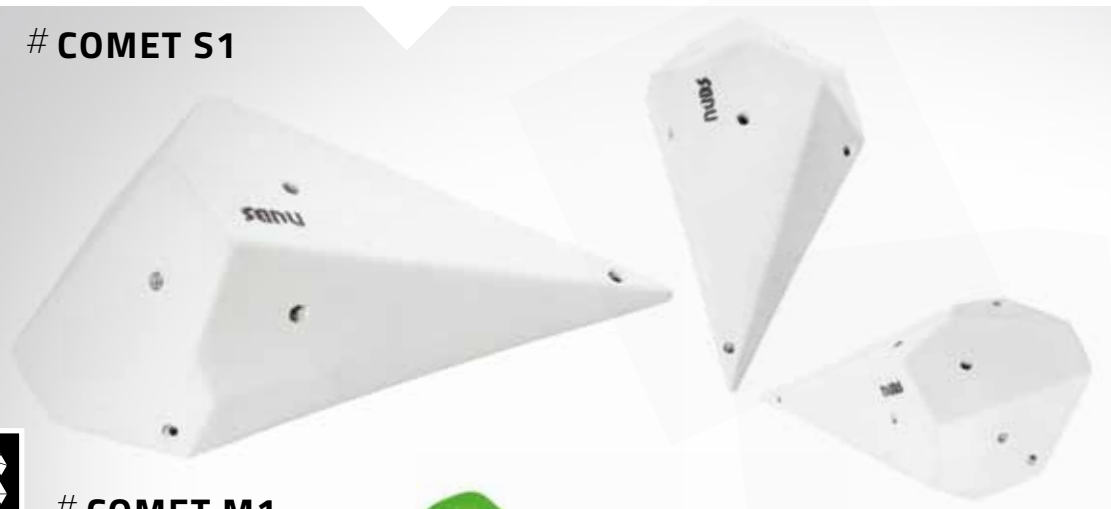


12 month warranty



Small, smart and flexible

COMET S1



Size (w x l x h):	46 cm x 24 cm 16 cm
Weight:	1,2 kg
Nr. of holes for additional holds:	4
Material:	polyester
Fixing:	screw-on

COMET M1



Size (w x l x h):	65 cm x 32 cm 20 cm
Weight:	2,15 kg
Nr. of holes for additional holds:	7
Material:	polyester
Fixing:	screw-on

**SPACE
PROGRAM**

ALIEN L1



Size (w x l x h):	82 cm x 32 cm 15 cm
Weight:	3,5 kg
Nr. of holes for additional holds:	0
Material:	polyester
Fixing:	screw-on

JUPITER XL1



**SPACE
PROGRAM**



Size (w x l x h):	ø 102 cm x 35 cm
Weight:	10,5 kg
Nr. of holes for additional holds:	8
Material:	polyester
Fixing:	screw-on

MARS S1



Size (w x l x h):	33 cm x 31 cm x 10 cm
Weight:	1,5 kg
Nr. of holes for additional holds:	0
Material:	polyester
Fixing:	screw-on

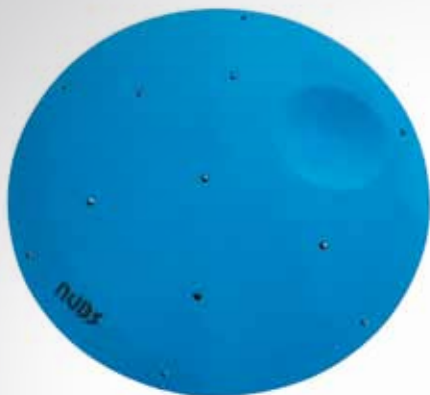
VENUS XL1

SPACE PROGRAM



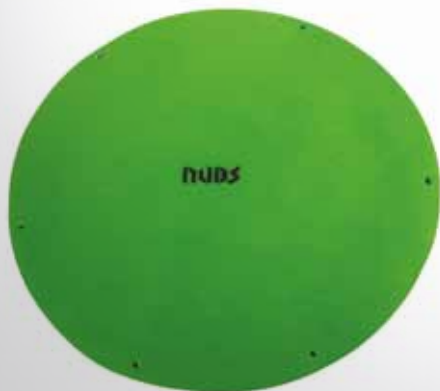
Size (w x l x h):	ø 80 cm x 30 cm
Weight:	8 kg
Nr. of holes for additional holds:	13
Material:	polyester
Fixing:	screw-on

FULL MOON M1



Size (w x l x h):	ø 60 cm x 7 cm
Weight:	3,2 kg
Nr. of holes for additional holds:	6
Material:	polyester
Fixing:	screw-on

FULL MOON M2



Size (w x l x h):	ø 60 cm x 7 cm
Weight:	3,2 kg
Nr. of holes for additional holds:	0
Material:	polyester
Fixing:	screw-on

**SPACE
PROGRAM**



MOON S1



Size (w x l x h):	33 cm x 33 cm x 17 cm
Weight:	1,5 kg
Nr. of holes for additional holds:	0
Material:	polyester
Fixing:	screw-on

MOON S2



SPACE PROGRAM

Size (w x l x h):	41 cm x 33 cm x 19 cm
Weight:	2,0 kg
Nr. of holes for additional holds:	1
Material:	polyester
Fixing:	screw-on

MOON S3



Size (w x l x h):	ø 28 cm x 9 cm
Weight:	1,15 kg
Nr. of holes for additional holds:	0
Material:	polyester
Fixing:	screw-on

MOON S4



Size (w x l x h):	ø 28 cm x 9 cm
Weight:	1,15 kg
Nr. of holes for additional holds:	0
Material:	polyester
Fixing:	screw-on

**SPACE
PROGRAM**



MOON M1

Size (w x l x h):	57 cm x 20 cm x 11 cm
Weight:	1,4 kg
Nr. of holes for additional holds:	3
Material:	polyester
Fixing:	screw-on

**SPACE
PROGRAM**

MOON M2



Size (w x l x h):	39 cm x 33 cm x 14 cm
Weight:	1,7 kg
Nr. of holes for additional holds:	0
Material:	polyester
Fixing:	screw-on

MOON M3



Size (w x l x h):	39 cm x 33 cm x 14 cm
Weight:	1,7 kg
Nr. of holes for additional holds:	0
Material:	polyester
Fixing:	screw-on

**SPACE
PROGRAM**

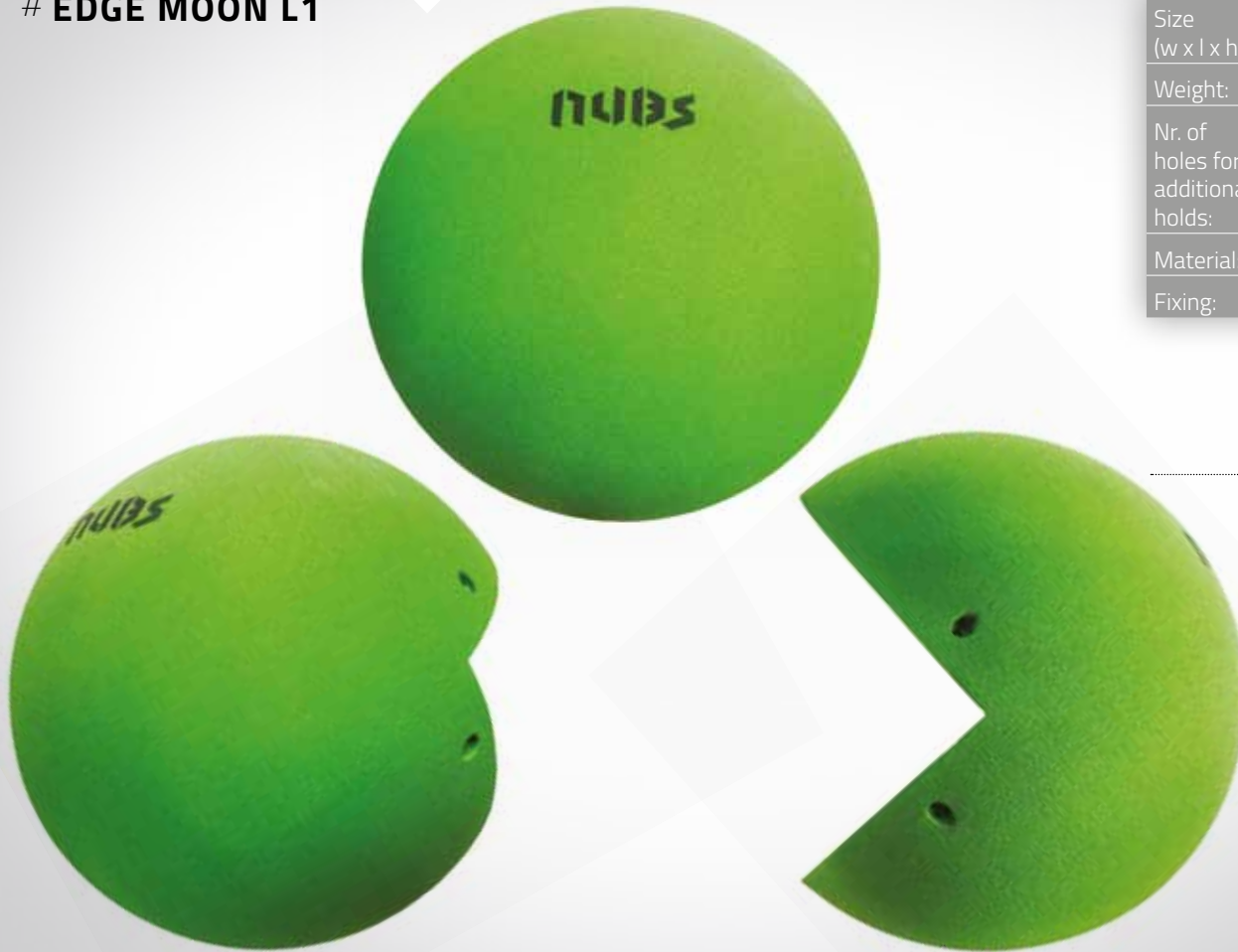


MOON XL1

Size (w x l x h):	ø 102 cm x 20 cm
Weight:	8 kg
Nr. of holes for additional holds:	14
Material:	polyester
Fixing:	screw-on, included

**SPACE
PROGRAM**

EDGE MOON L1



Size (w x l x h):	30 cm x 30 cm x 30 cm
Weight:	1,8 kg
Nr. of holes for additional holds:	0
Material:	polyester
Fixing:	screw-on

**SPACE
PROGRAM**



Johnny cat 5.11+, Cat wall, Indian Creek, Utah
Climber: Miha Praprotnik
Photo: Duncan Mc Callum



PYRAMID PROGRAM



Excellent friction



Durability



Simple installation



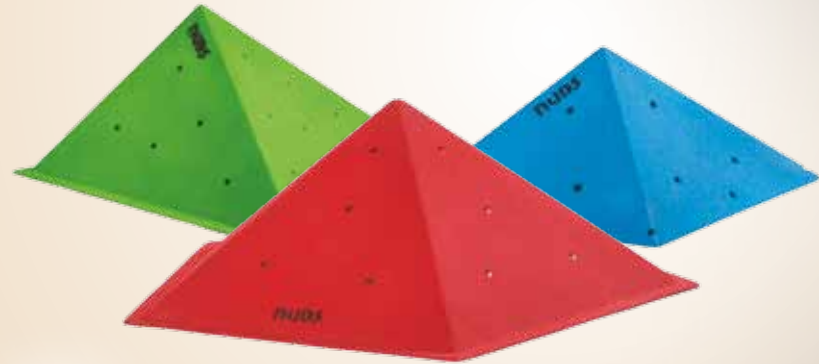
Adding holds possibility



Aesthetic



12 month warranty



Small, smart and flexible

PYRAMID XS1

Size (w x l x h):	32 cm x 22 cm x 13 cm
Weight:	0,7 kg
Nr. of holes for additional holds:	0
Material:	polyester
Fixing:	screw-on

PYRAMID XS2

Size (w x l x h):	45 cm x 26 cm x 13 cm
Weight:	0,6 kg
Nr. of holes for additional holds:	0
Material:	polyester
Fixing:	screw-on

**PYRAMID
PROGRAM**

PYRAMID XS3



Size (w x l x h):	38 cm x 22 cm x 11 cm
Weight:	0,8 kg
Nr. of holes for additional holds:	0
Material:	polyester
Fixing:	screw-on

PYRAMID S1



**PYRAMID
PROGRAM**



Size (w x l x h):	51 cm x 32 cm x 16 cm
Weight:	1,4 kg
Nr. of holes for additional holds:	5
Material:	polyester
Fixing:	screw-on

PYRAMID S2



Size (w x l x h):	45 cm x 26 cm x 19 cm
Weight:	1,5 kg
Nr. of holes for additional holds:	3
Material:	polyester
Fixing:	screw-on

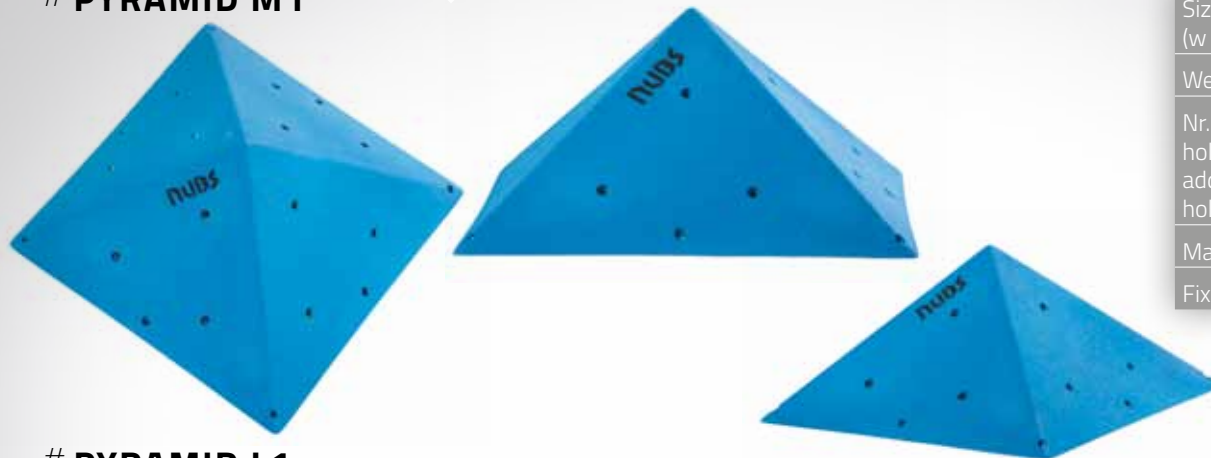
PYRAMID S3



Size (w x l x h):	38 cm x 26 cm x 14 cm
Weight:	1,5 kg
Nr. of holes for additional holds:	3
Material:	polyester
Fixing:	screw-on

**PYRAMID
PROGRAM**

PYRAMID M1



Size (w x l x h):	44 cm x 44 cm x 21 cm
Weight:	3,5 kg
Nr. of holes for additional holds:	12
Material:	polyester
Fixing:	screw-on

PYRAMID L1



**PYRAMID
PROGRAM**



Size (w x l x h):	94 cm x 48 cm x 18 cm
Weight:	3,1 kg
Nr. of holes for additional holds:	15
Material:	polyester
Fixing:	screw-on

PYRAMID L2



Size (w x l x h):	80 cm x 80 cm x 29 cm
Weight:	7 kg
Nr. of holes for additional holds:	20
Material:	polyester
Fixing:	screw-on

PYRAMID L3



Size (w x l x h):	115 cm x 88 cm x 32 cm
Weight:	6,5 kg
Nr. of holes for additional holds:	19
Material:	polyester
Fixing:	screw-on

**PYRAMID
PROGRAM**

PYRAMID L4



Size (w x l x h):	82 cm x 75 cm x 32 cm
Weight:	4,5 kg
Nr. of holes for additional holds:	16
Material:	polyester
Fixing:	screw-on

**PYRAMID
PROGRAM**



Skywalker, 5.8, 135 m, Squamish, British Columbia, Canada.
Climber: Lindy Smith
Photo: Andy Reeve



CUBE PROGRAM



Excellent friction



Durability



Simple installation



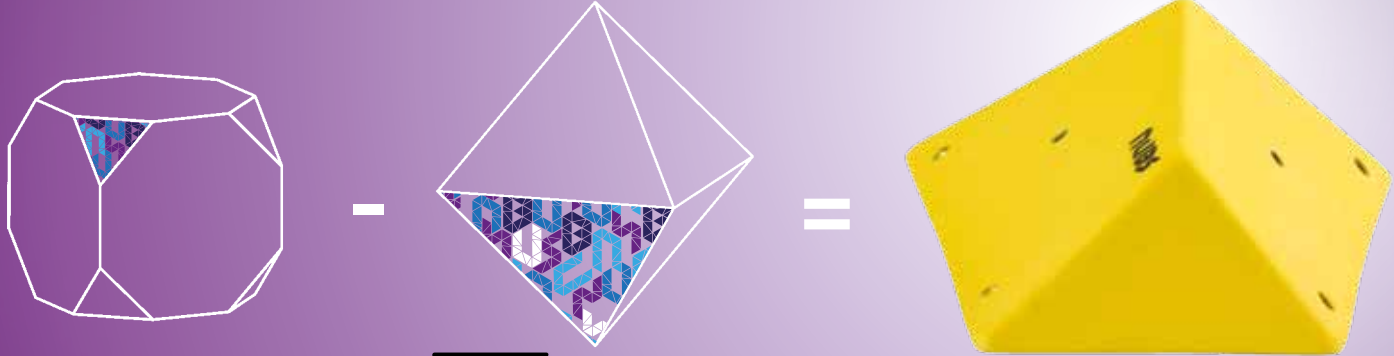
Adding holds possibility



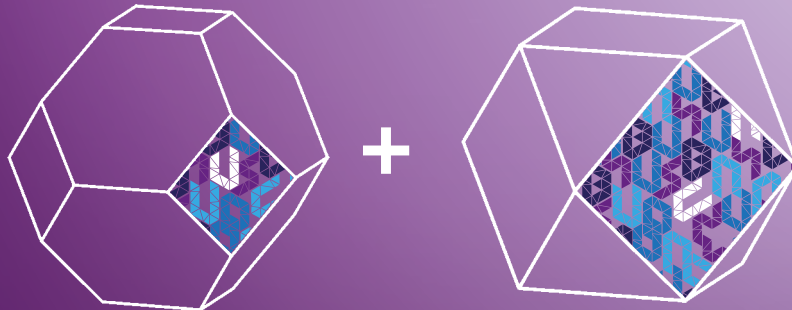
Aesthetic



12 month warranty



$$M - \pi R I - \pi R \sqrt{R^2 + h^2}$$



Small, smart and flexible

CUBE XS1



Size (w x l x h):	26 cm x 26 cm x 11 cm
Weight:	0,9 kg
Nr. of holes for additional holds:	2
Material:	polyester
Fixing:	screw-on

CUBE XS2



Size (w x l x h):	34 cm x 27 cm x 15 cm
Weight:	1,1 kg
Nr. of holes for additional holds:	3
Material:	polyester
Fixing:	screw-on

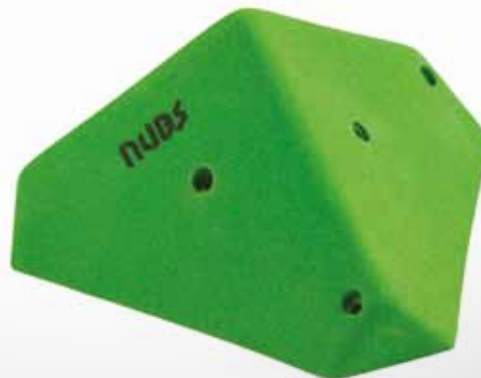
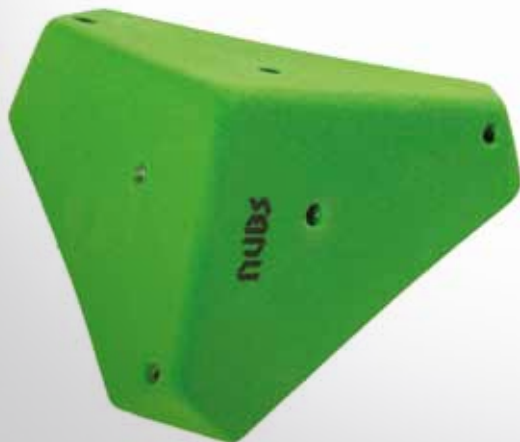
**CUBE
PROGRAM**

CUBE XS3



Size (w x l x h):	31 cm x 27 cm x 10 cm
Weight:	1,0 kg
Nr. of holes for additional holds:	2
Material:	polyester
Fixing:	screw-on

CUBE XS4



Size (w x l x h):	24 cm x 24 cm x 13 cm
Weight:	1,0 kg
Nr. of holes for additional holds:	3
Material:	polyester
Fixing:	screw-on

**CUBE
PROGRAM**



CUBE S1



Size (w x l x h):	32 cm x 30 cm x 13 cm
Weight:	1,5 kg
Nr. of holes for additional holds:	5
Material:	polyester
Fixing:	screw-on

CUBE S2



Size (w x l x h):	47 cm x 26 cm x 15 cm
Weight:	1,6 kg
Nr. of holes for additional holds:	5
Material:	polyester
Fixing:	screw-on

**CUBE
PROGRAM**

CUBE S3



Size (w x l x h):	38 cm x 27 cm x 8 cm
Weight:	1,0 kg
Nr. of holes for additional holds:	2
Material:	polyester
Fixing:	screw-on

CUBE S4



**CUBE
PROGRAM**



Size (w x l x h):	33 cm x 33 cm x 9 cm
Weight:	1,4 kg
Nr. of holes for additional holds:	2
Material:	polyester
Fixing:	screw-on

CUBE M1



Size (w x l x h):	57 cm x 34 cm x 21 cm
Weight:	2,4 kg
Nr. of holes for additional holds:	8
Material:	polyester
Fixing:	screw-on

CUBE M2



Size (w x l x h):	53 cm x 28 cm x 10 cm
Weight:	2,5 kg
Nr. of holes for additional holds:	8
Material:	polyester
Fixing:	screw-on

**CUBE
PROGRAM**

ANIMAL PROGRAM



Excellent friction



Durability



Simple installation



Adding holds possibility



Aesthetic



12 month warranty



+



which came first ? ????



Small, smart and flexible

ARMADILLO XS1



Size (w x l x h):	45 cm x 19 cm x 9 cm
Weight:	0,8 kg
Nr. of holes for additional holds:	2
Material:	polyester
Fixing:	screw-on

ARMADILLO S1



ANIMAL PROGRAM

Size (w x l x h):	44 cm x 21 cm x 15 cm
Weight:	1,25 kg
Nr. of holes for additional holds:	6
Material:	polyester
Fixing:	screw-on

ARMADILLO M1



Size (w x l x h):	57 cm x 23 cm x 17 cm
Weight:	2,7 kg
Nr. of holes for additional holds:	7
Material:	polyester
Fixing:	screw-on

ARMADILLO XL1



**ANIMAL
PROGRAM**

Size (w x l x h):	100 cm x 66 cm x 31 cm
Weight:	9,5 kg
Nr. of holes for additional holds:	40
Material:	polyester
Fixing:	screw-on



SNAIL L1

Size (w x l x h):	84 cm x 30 cm x 20 cm
Weight:	3,5 kg
Nr. of holes for additional holds:	4
Material:	polyester
Fixing:	screw-on

**ANIMAL
PROGRAM**

NATURE PROGRAM



Excellent friction



Durability



Simple installation



Adding holds possibility



Aesthetic



12 month warranty



Small, smart and flexible

WAVE S1



Size (w x l x h):	ø 28 cm x 18 cm
Weight:	2,0 kg
Nr. of holes for additional holds:	0
Material:	polyester
Fixing:	bolt & screw-on
Length of bolt:	16 cm

WAVE S2



Size (w x l x h):	40 cm x 21 cm x 13 cm
Weight:	1,4 kg
Nr. of holes for additional holds:	0
Material:	polyester
Fixing:	bolt & screw-on
Length of bolt:	13 cm

**NATURE
PROGRAM**

WALNUT S1



Size (w x l x h):	42 cm x 30 cm x 18 cm
Weight:	2,3 kg
Nr. of holes for additional holds:	0
Material:	polyester
Fixing:	bolt & screw-on
Length of bolt:	16 cm

BIRD HEAD S1



Size (w x l x h):	39 cm x 25 cm x 15 cm
Weight:	1,6 kg
Nr. of holes for additional holds:	0
Material:	polyester
Fixing:	bolt & screw-on
Length of bolt:	16 cm

**NATURE
PROGRAM**



ICEBERG M1



Size (w x l x h):	79 cm x 40 cm x 19 cm
Weight:	3,0 kg
Nr. of holes for additional holds:	3
Material:	polyester
Fixing:	screw-on

SNAKE HANDMADE L



Size (w x l x h):	150 cm x 15 cm x 18 cm
Weight:	3,0 kg
Nr. of holes for additional holds:	0
Material:	polyester
Fixing:	screw-on

**NATURE
PROGRAM**

WOOD PROGRAM



Excellent friction



Durability



Simple installation



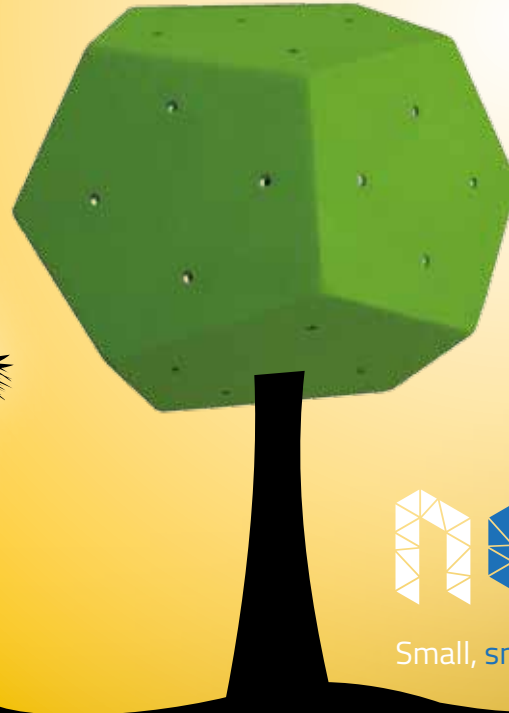
Adding holds possibility



Aesthetic



12 month warranty



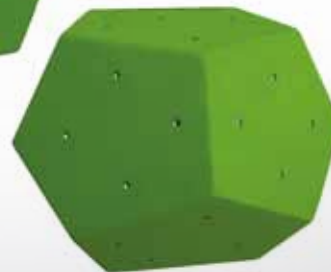
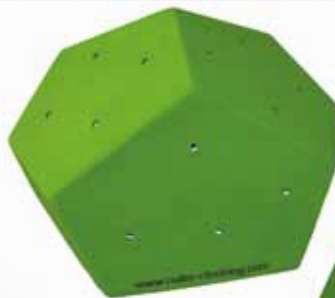
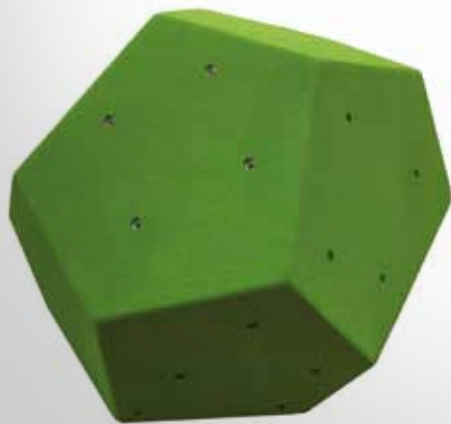
Small, smart and flexible

LOOP M1



Size (w x l x h):	58 cm x 52 cm x 15 cm
Nr. of holes for additional holds:	11
Material:	plywood
Fixing:	screw-on

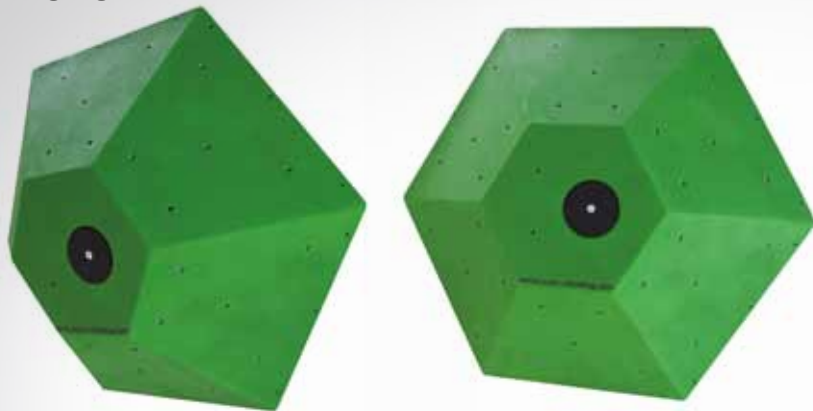
BALL XL1



WOOD PROGRAM

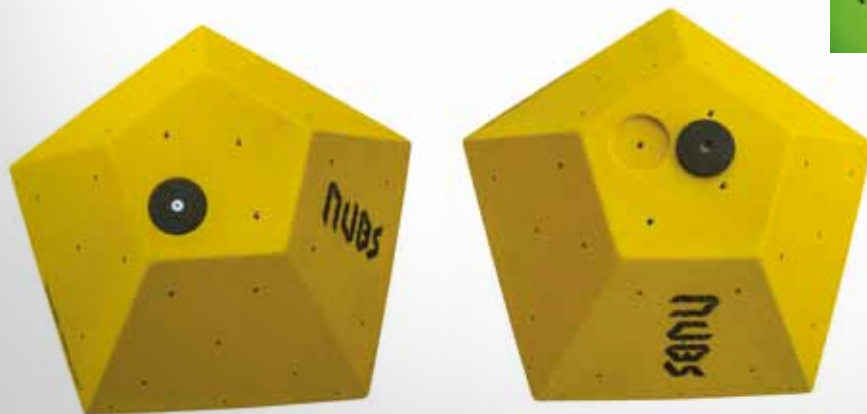
Size (w x l x h):	60 cm x 50 cm x 40 cm
Nr. of holes for additional holds:	28
Material:	plywood
Fixing:	screw-on

UFO XL1



Size (w x l x h):	100 cm x 100 cm x 40 cm
Nr. of holes for additional holds:	33
Material:	plywood
Fixing:	screw-on

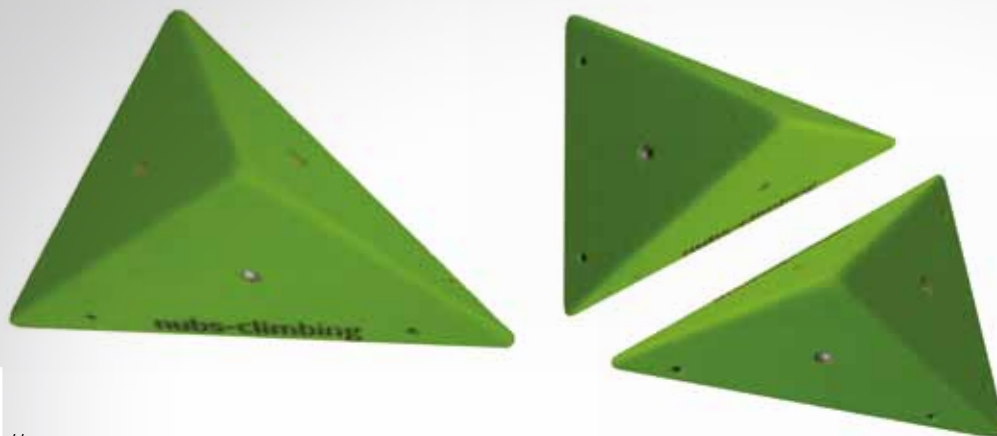
UFO XL2



WOOD PROGRAM



Size (w x l x h):	100 cm x 100 cm x 40 cm
Nr. of holes for additional holds:	29
Material:	wood
Fixing:	screw-on

NUBS PYRAMID XS1

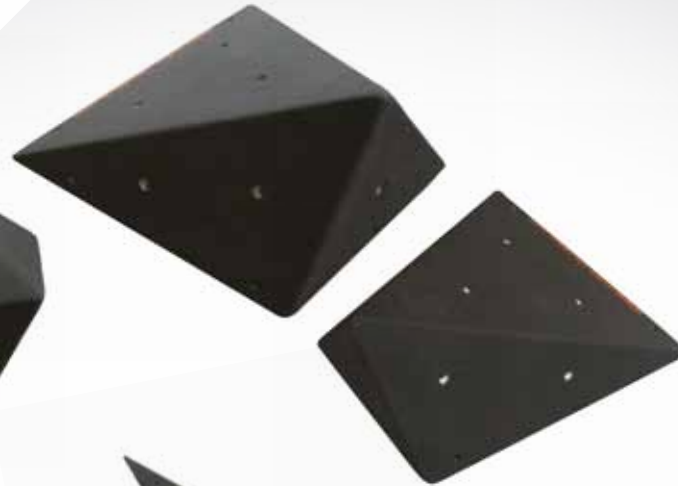
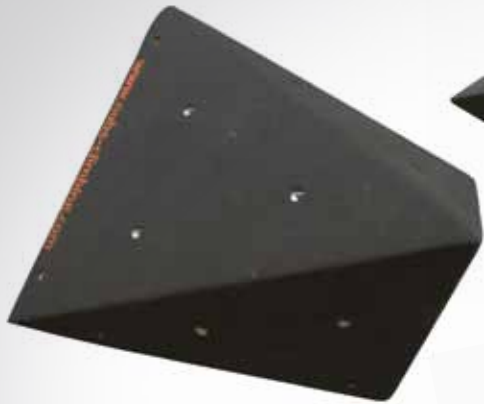
Size (w x l x h):	33 cm x 32 cm x 15 cm
Nr. of holes for additional holds:	3
Material:	plywood
Fixing:	screw-on

NUBS PYRAMID S1

Size (w x l x h):	24 cm x 62 cm x 19 cm
Nr. of holes for additional holds:	5
Material:	plywood
Fixing:	screw-on

**WOOD
PROGRAM**

NUBS PYRAMID M1



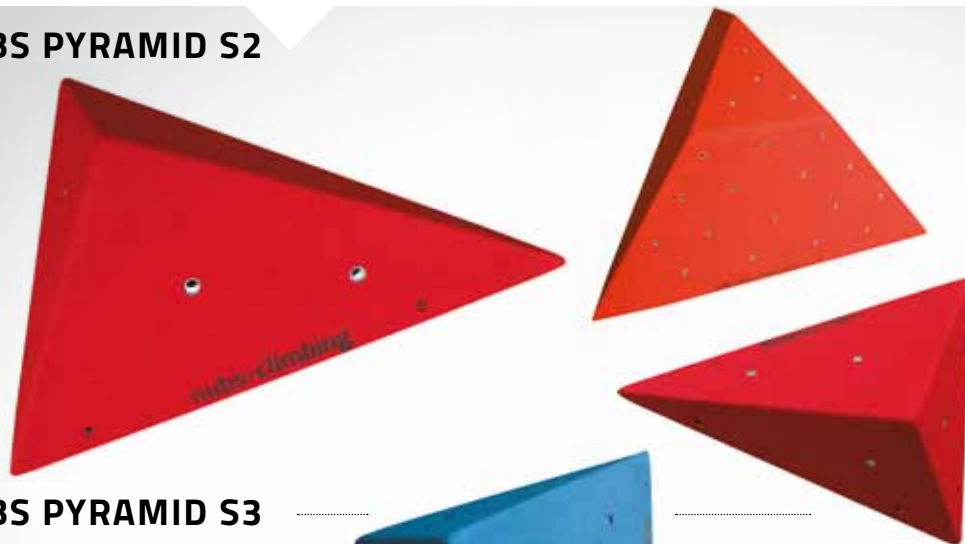
Size (w x l x h):	40 cm x 40 cm x 19 cm
Nr. of holes for additional holds:	8
Material:	plywood
Fixing:	screw-on

NUBS PYRAMID S1 & M1

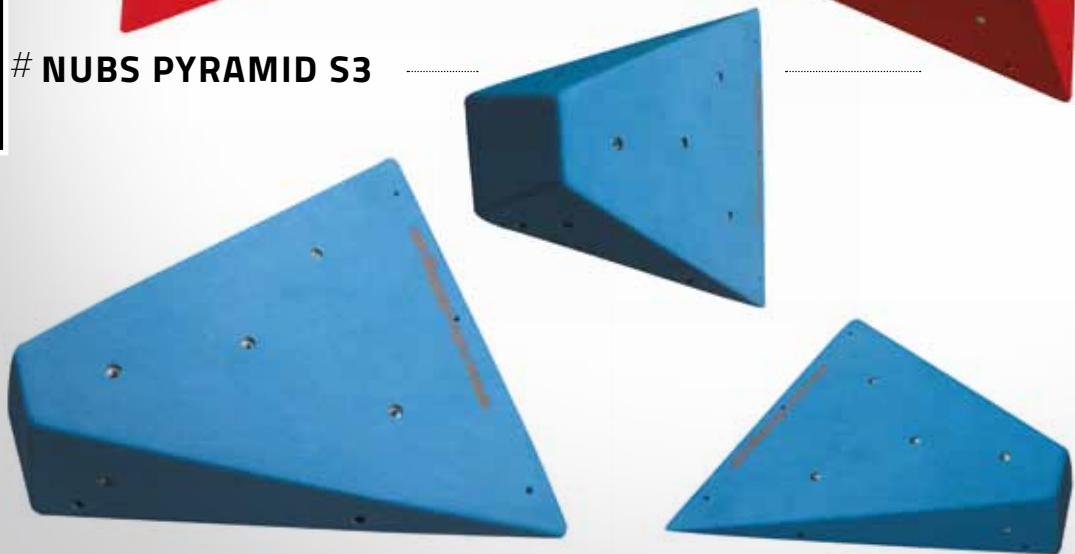


**WOOD
PROGRAM**



NUBS PYRAMID S2

Size (w x l x h):	35 cm x 48 cm x 12 cm
Nr. of holes for additional holds:	4
Material:	plywood
Fixing:	screw-on

NUBS PYRAMID S3

**WOOD
PROGRAM**

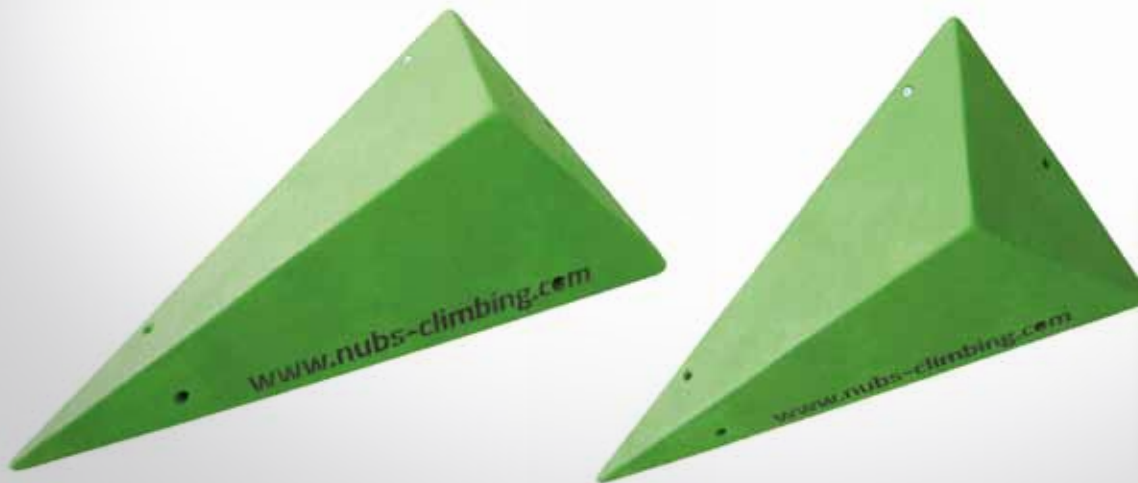
Size (w x l x h):	49 cm x 53 cm x 12 cm
Nr. of holes for additional holds:	6
Material:	plywood
Fixing:	screw-on

NUBS PYRAMID S4



Size (w x l x h):	34 cm x 50 cm x 16 cm
Nr. of holes for additional holds:	5
Material:	plywood
Fixing:	screw-on

NUBS PYRAMID S5

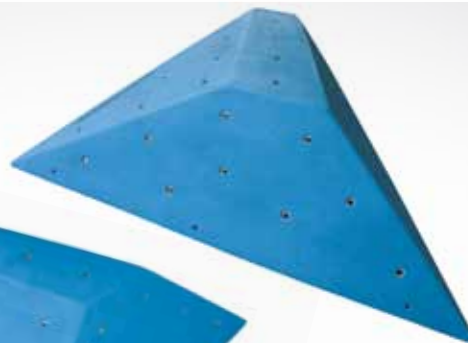


**WOOD
PROGRAM**



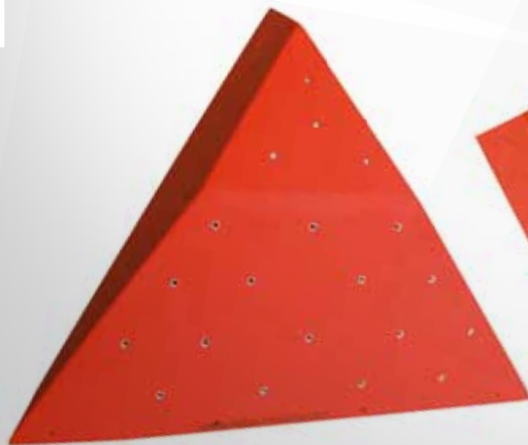
Size (w x l x h):	40 cm x 20 cm x 12 cm
Nr. of holes for additional holds:	0
Material:	plywood
Fixing:	screw-on

NUBS PYRAMID L1



Size (w x l x h):	93 cm x 94 cm x 16 cm
Nr. of holes for additional holds:	22
Material:	plywood
Fixing:	screw-on

NUBS PYRAMID XL1



WOOD PROGRAM

Size (w x l x h):	114 cm x 108 cm x 23 cm
Nr. of holes for additional holds:	40
Material:	plywood
Fixing:	screw-on

CAMPUS RUNGS

The rungs are attached to the training wall with screws in a specific sequence and spacing. They are intended for specific training of climbers and their optimum efficiency is achieved on a base with an inclination of 15 to 20 degrees. They are made of Slovenian solid ash wood and are available in different thicknesses and lengths. Since they are equally rounded on both sides, you can turn them around after a lengthy professional use and use the other side.

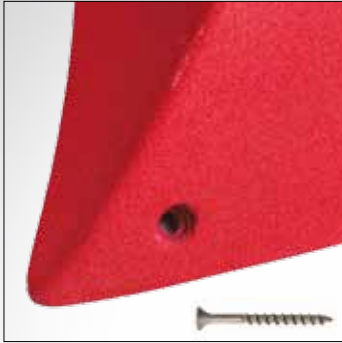


Size in cm:		Dimensions in mm (h x w x l)	Weight in kg
25 cm	S	19 x 33 x 250	0,12
	M	23 x 43 x 250	0,18
	L	32 x 43 x 250	0,25
Fixing:		screw-on	

Size in cm:		Dimensions in mm (h x w x l)	Weight in kg
50 cm	S	19 x 33 x 500	0,23
	M	23 x 43 x 500	0,36
	L	32 x 43 x 500	0,49
Fixing:		screw-on	



TECHNICAL DATA



**TECHNICAL
DATA**

